



**Manual**

**USB Device Driver Installation**

---

# **USB Device Driver Installation Manual**

## **SRP-500 Inkjet Receipt Printer**

## Contents

- 1. Foreword ... 2**
- 2. Operating Environment ... 2**
- 3. Installing the USB Device Driver ... 3**
  - 3.1 Windows 98 ... 3
  - 3.2 Windows XP ... 11

## 1. Foreword

This manual explains how to install the USB Device Driver.

## 2. Operating Environment

- Microsoft Windows 98 Gold
- Microsoft Windows 98 Second Edition
- Microsoft Windows Millennium Edition
- Microsoft Windows 2000
- Microsoft Windows XP

### 3. Installing the USB Device Driver

#### 3.1 Windows 98

1. The [SRP-500] is detected and the [Add New Hardware Wizard] appears.



2. Click the [Next] button to display the following screen.



3. Select [Search for the best driver for your device. (Recommended)] and click the [Next] button to display the following screen.



4. Click the [Browse] button, installation folder location of USB Device Driver is specified.  
Ex.) C:\SRP500\_Ver10\USB\_Drv\_9x  
Click the [OK] button to start the search for the driver.
5. Click the [Next] button to display the following screen.



6. Click the [Next] button to display the following screen.

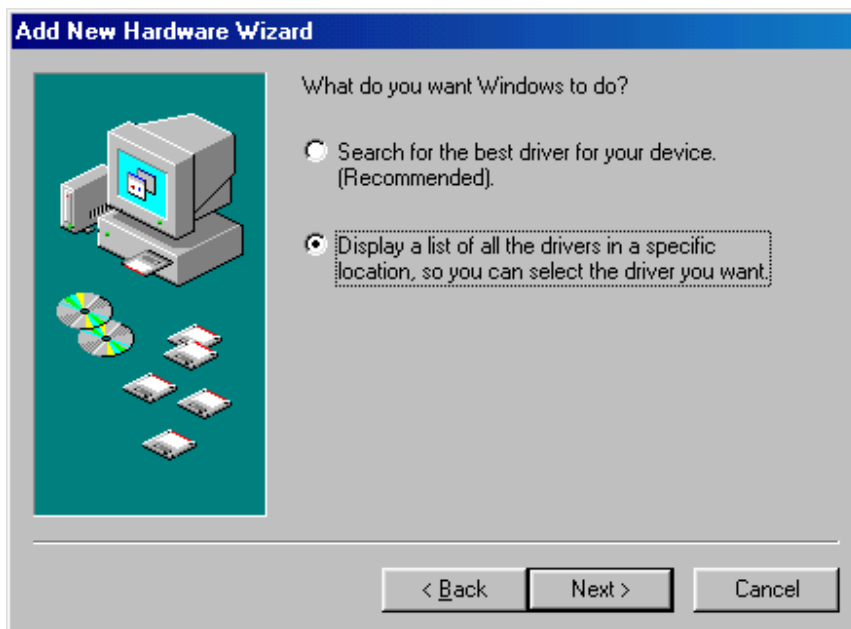


7. Click the [Finish] button to complete the installation process.

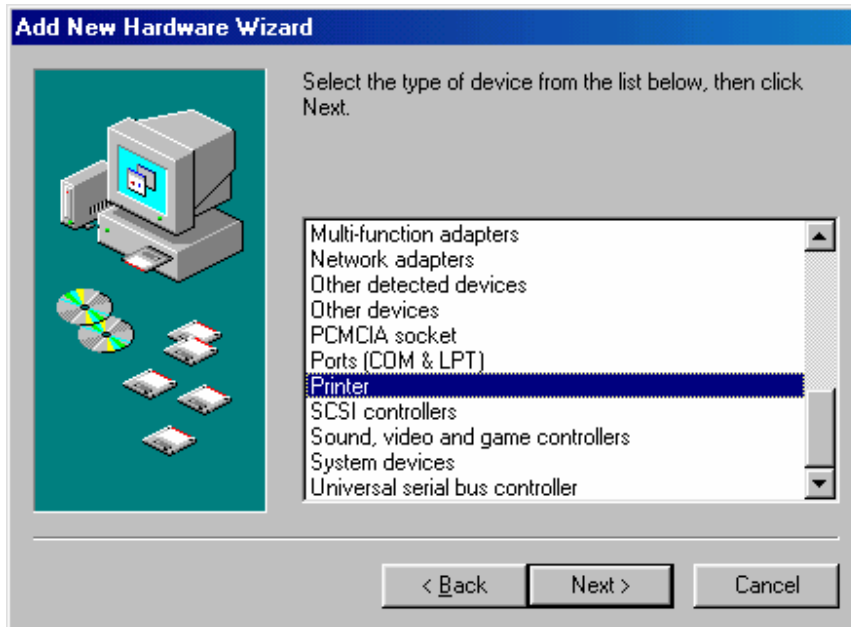
8. The [SAMSUNG SRP-500] is detected and the [Add New Hardware Wizard] appears.



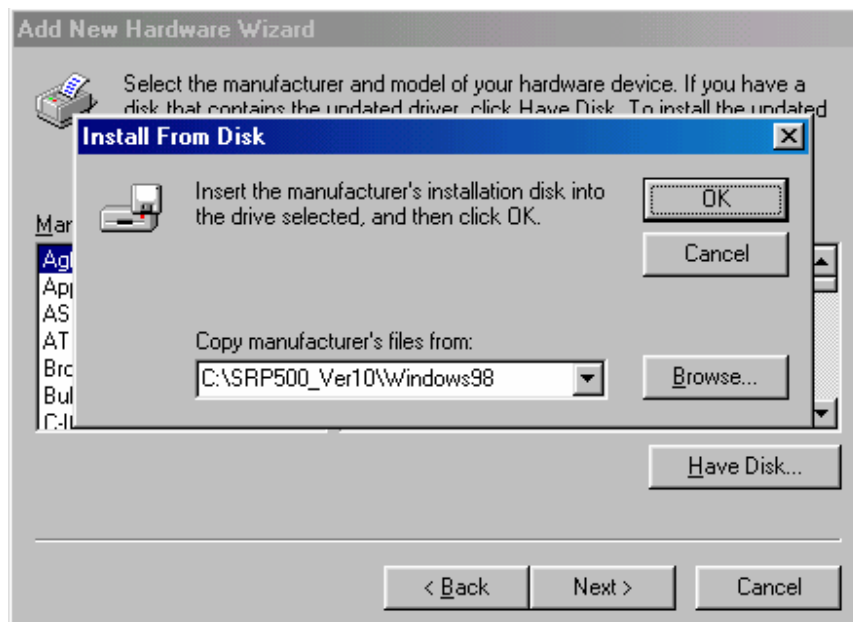
9. Click the [Next] button to display the following screen.



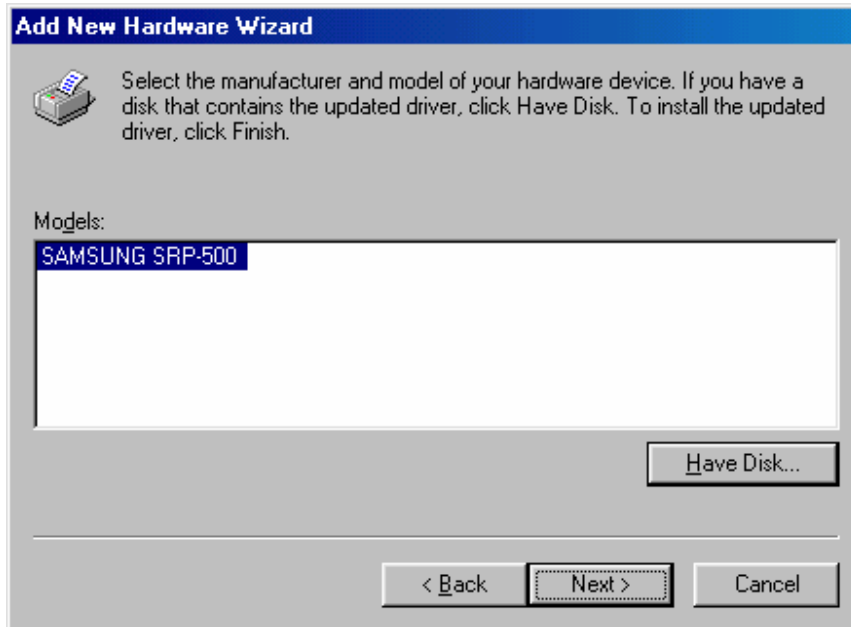
10. Select [Display a List of all the drivers in a specific ..... ] and click the [Next] button to display the following screen.



11. Select [Printer] and click the [Next] button to display the following screen.



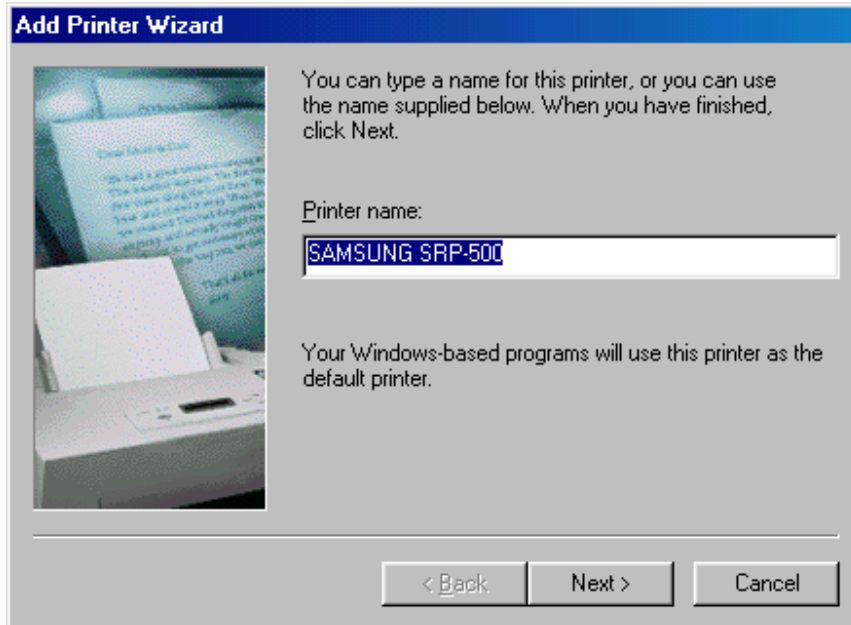
12. Click the [Have Disk] button, installation folder location of Windows Device Driver is specified. Ex.) C:\SRP500\_Ver10\Windows98  
Click the [OK] button to start the search for the driver.



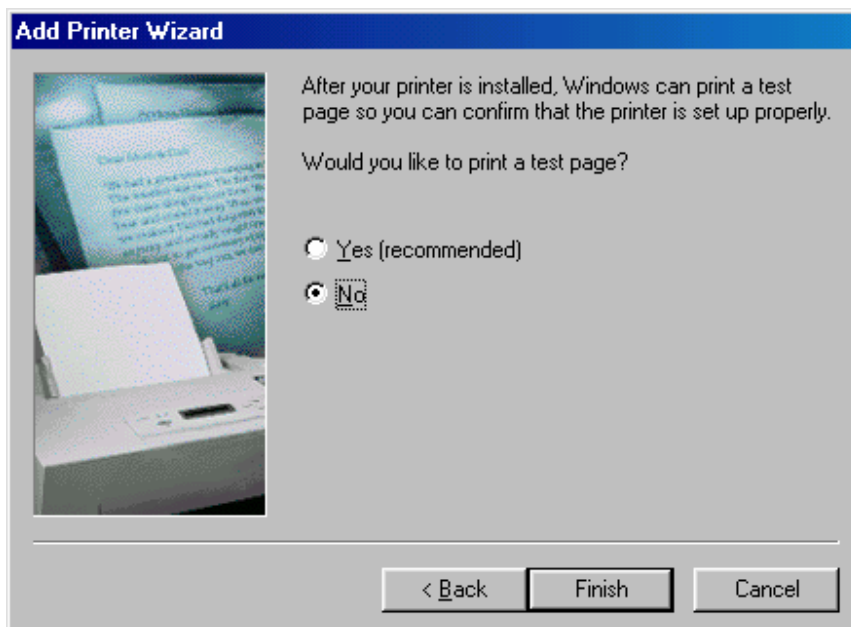
13. Click the [Next] button to display the following screen.



14. Click the [Next] button to display the following screen.



15. Click the [Next] button to display the following screen.



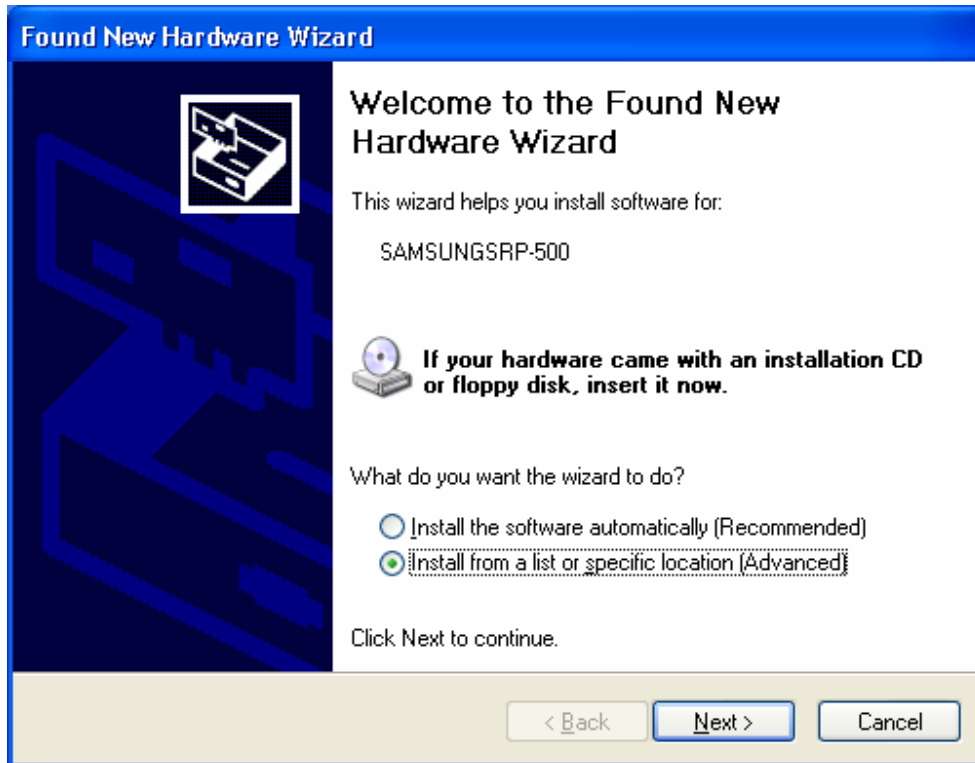
16. Select [No] and click the [Next] button to display the following screen.



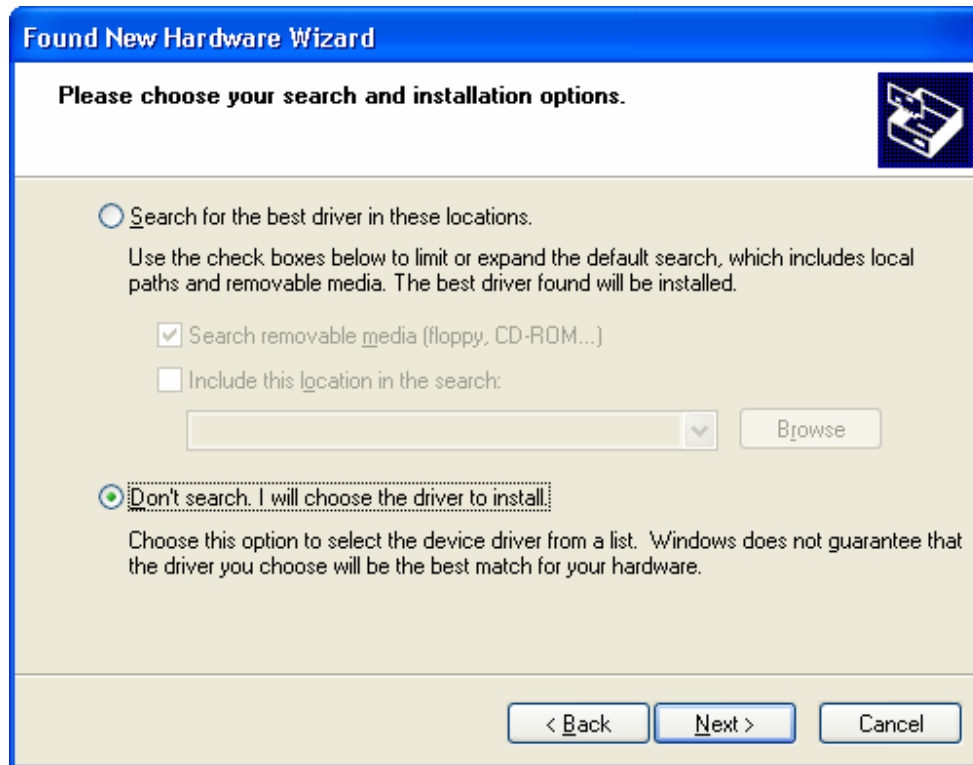
17. Click the [Finish] button to complete the installation process.

## 3.2 Windows XP

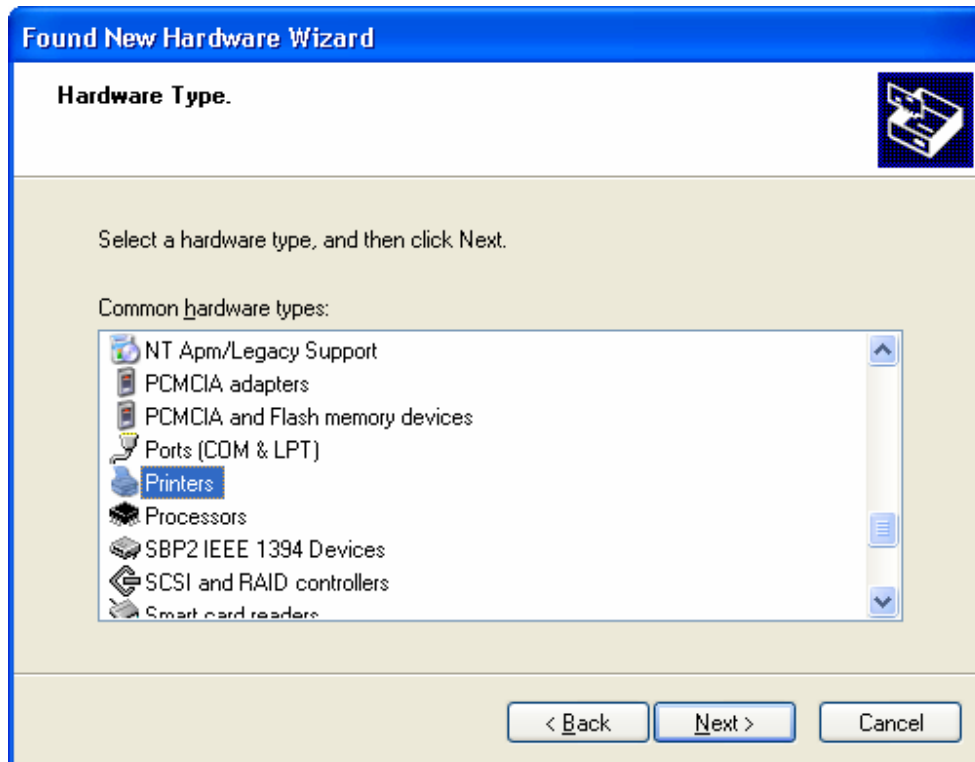
1. . The [SAMSUNG SRP-500] is detected and the [Add New Hardware Wizard] appears.



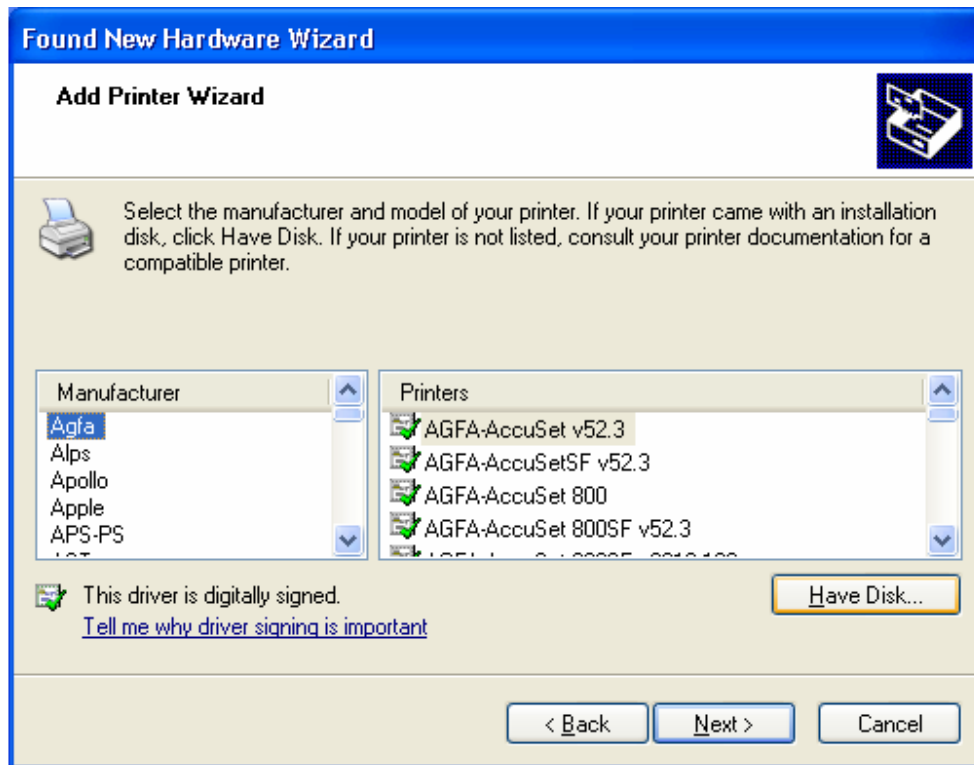
2. Select [Install from a list or specific location. (Advanced)] and click the [Next] button to display the following screen.



3. Select [Don't search. I will choose the driver to install.] and click the [Next] button to display the following screen.



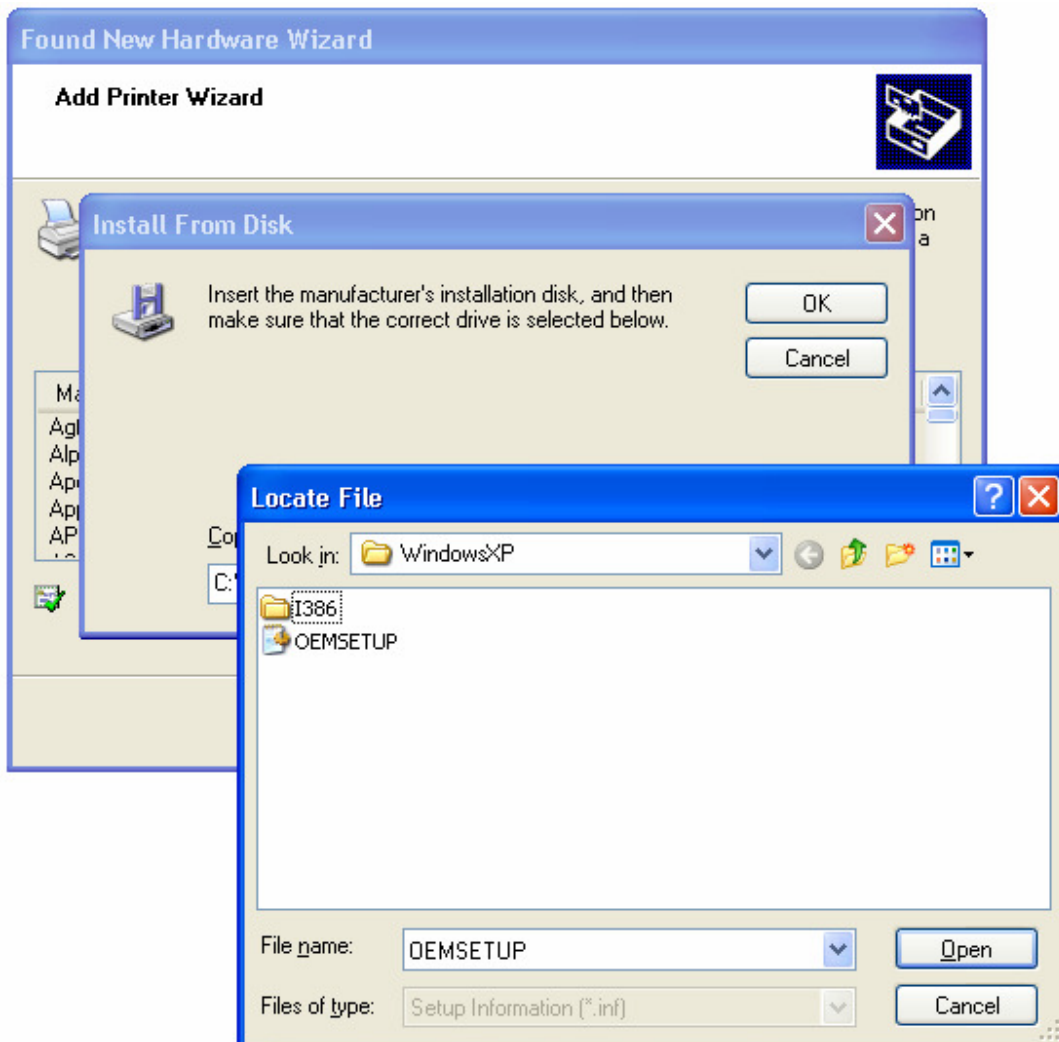
4. Select [Printer] and click the [Next] button to display the following screen.

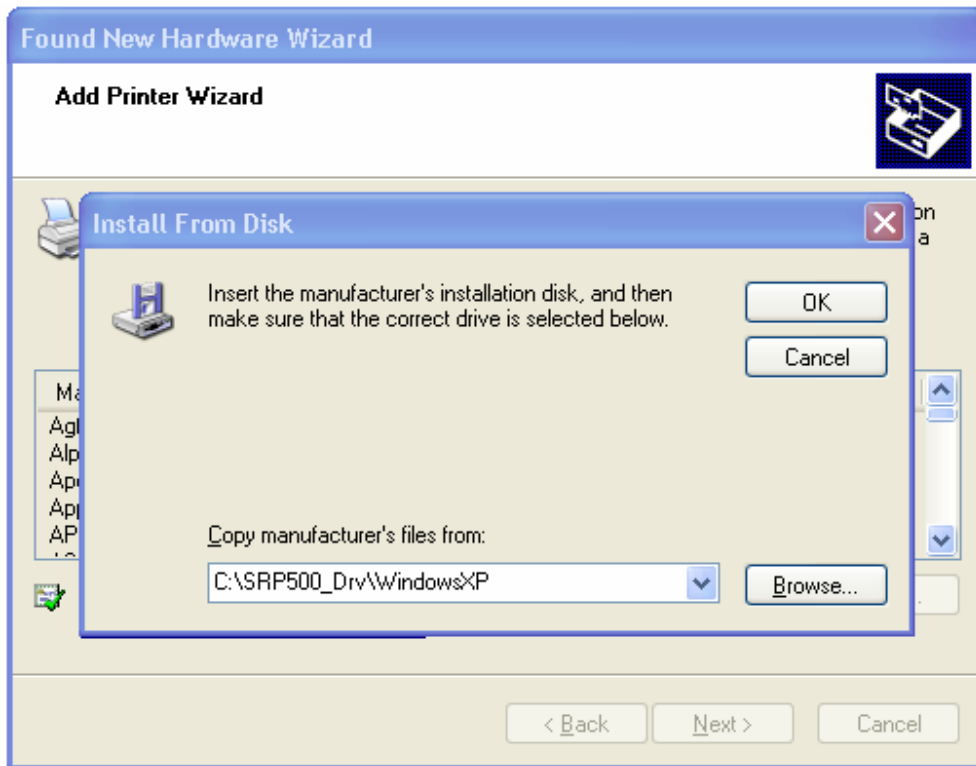


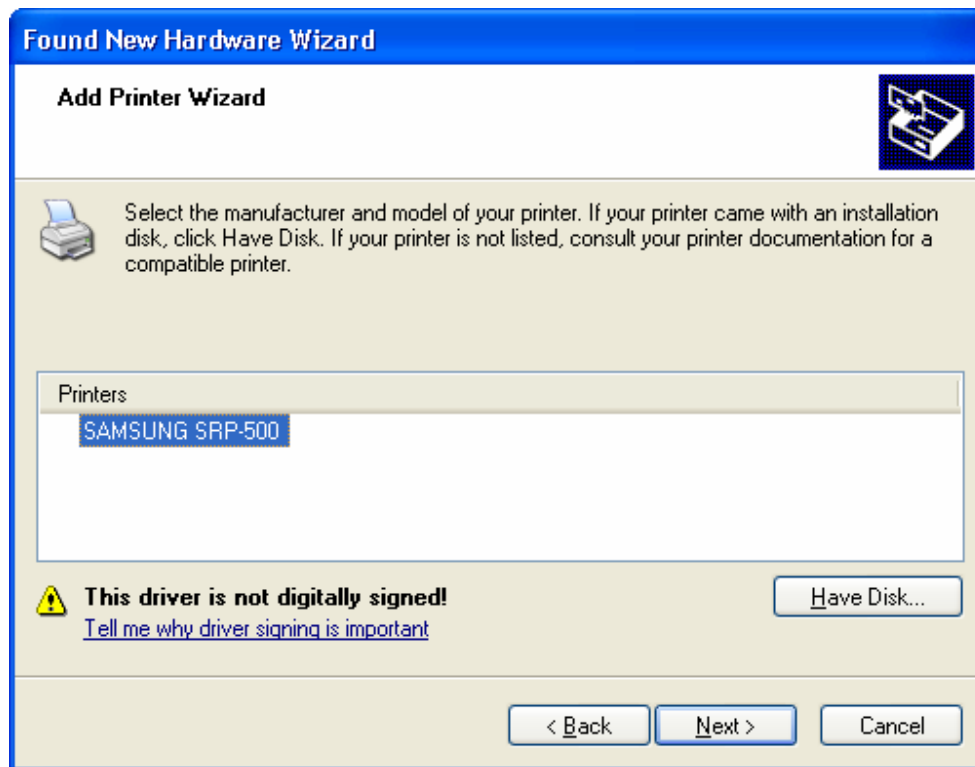
5. Click the [Have Disk] button, installation folder location of Windows Device Driver is specified.

Ex.) C:\SRP500\_Ver10\WindowsXP

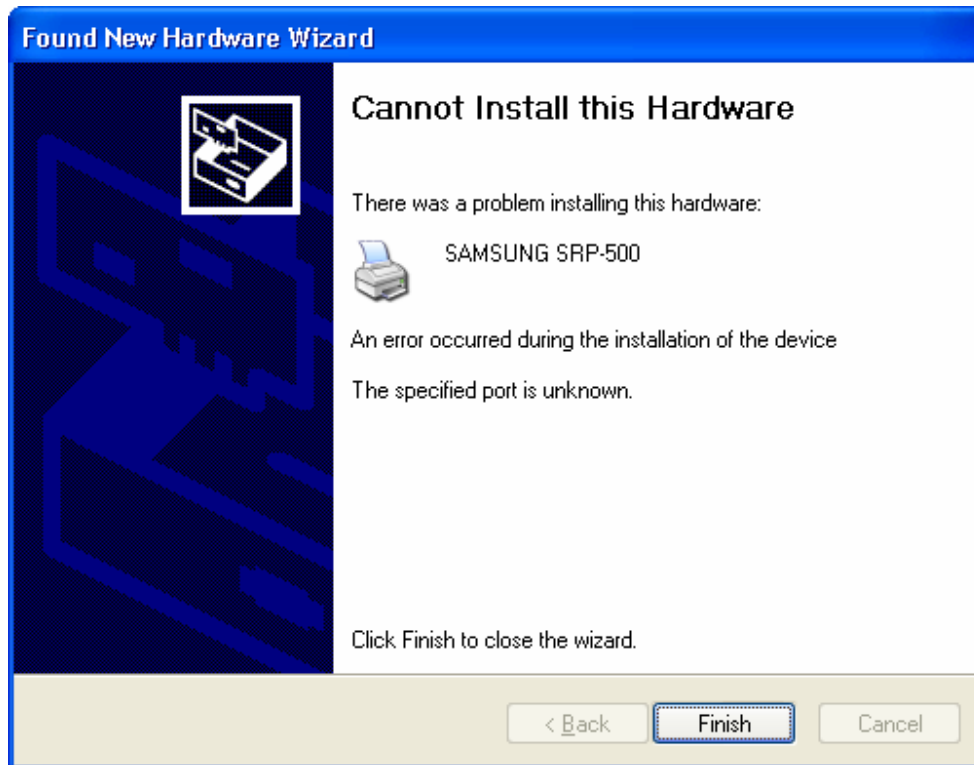
Click the [OK] button to start the search for the driver.







5. Click the [Next] button to display the following screen.



6. Click the [Finish] button to complete the installation process.